

MAKE INNOVATION HAPPEN



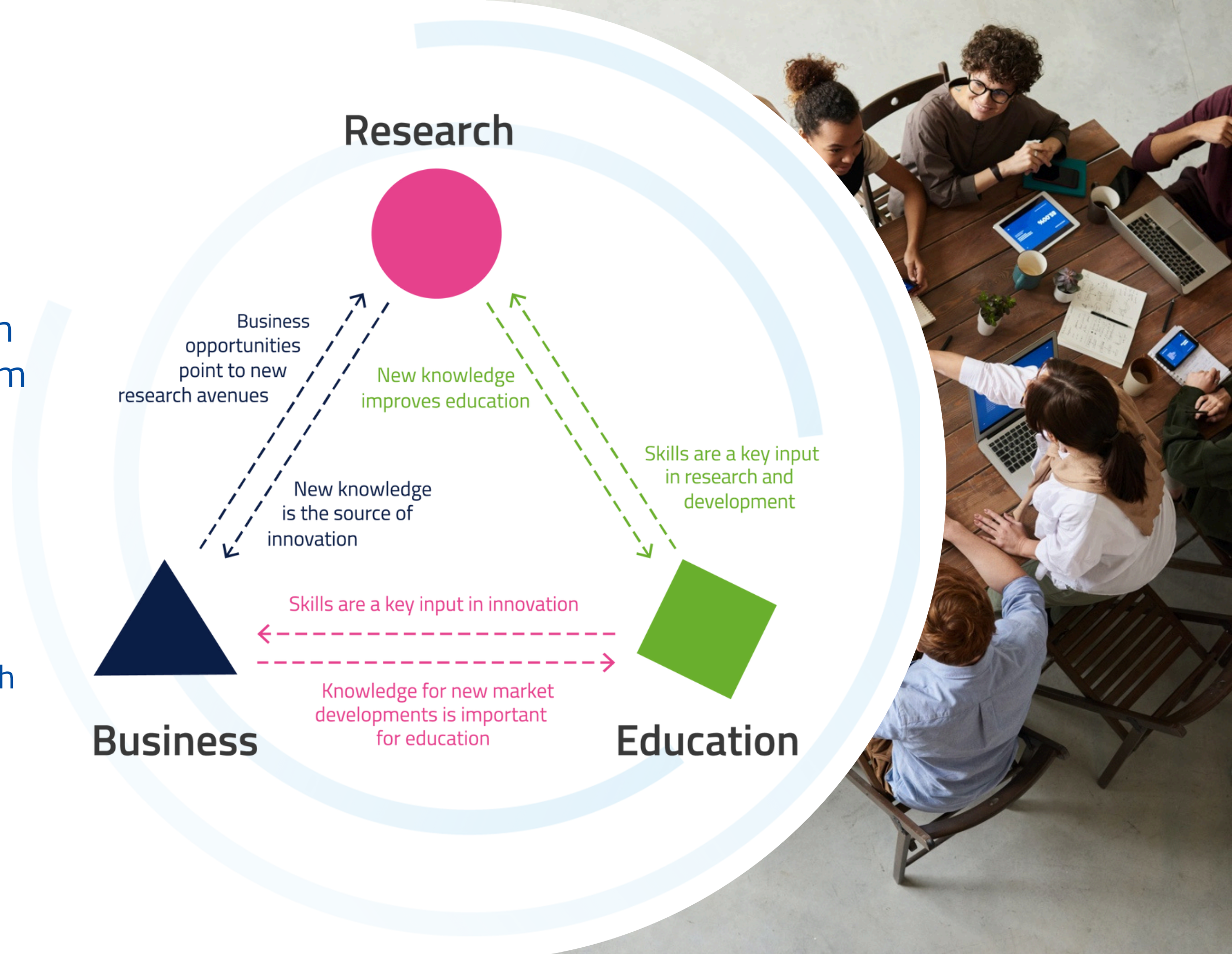


Carolina Sampaio Dinis
EIT Community Officer

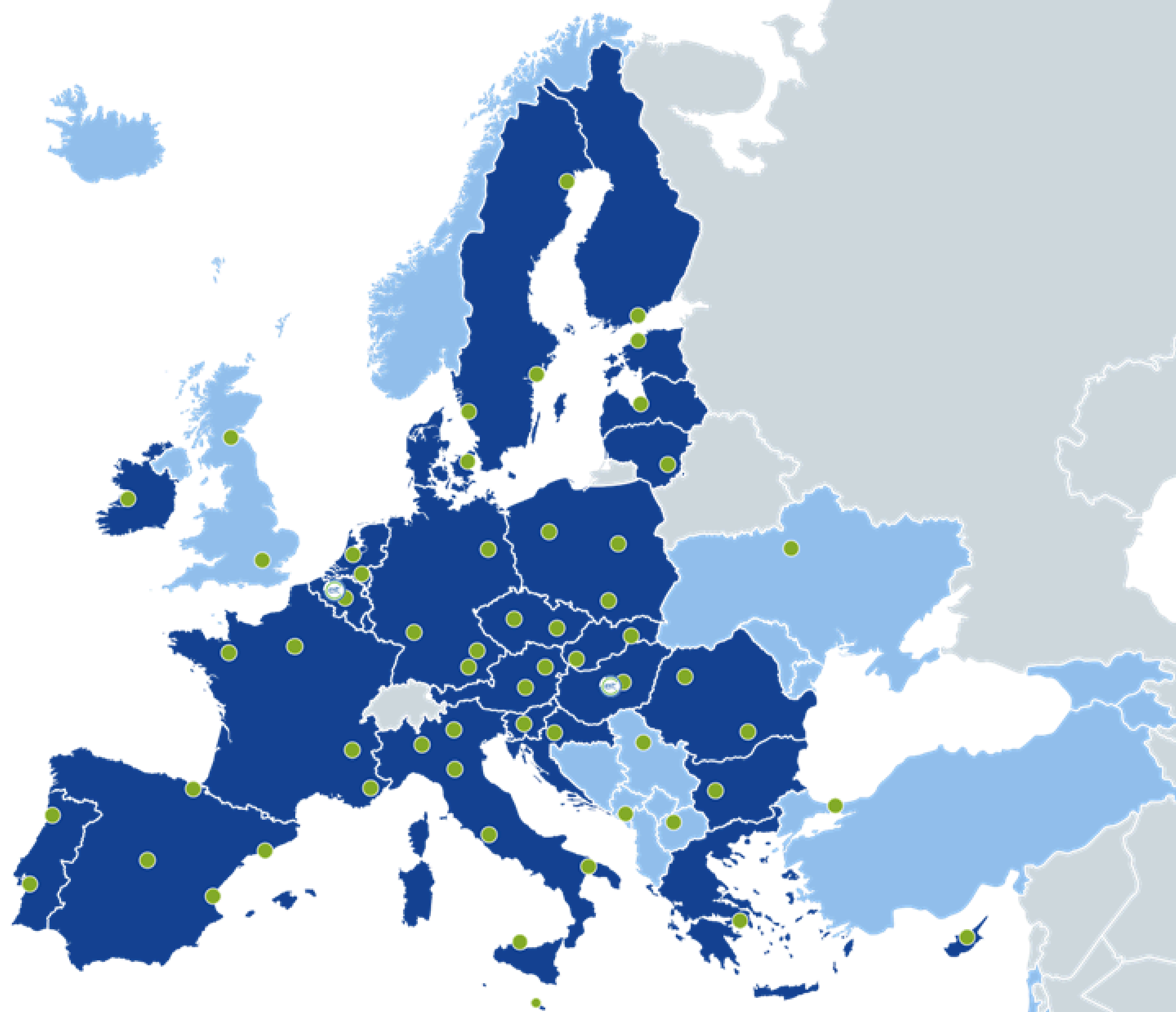
What is EIT?

The **European Institute of Innovation and Technology (EIT)** is an EU body which brings together leading organizations from business, education, and research — the **Knowledge Triangle**.

EIT supports **Knowledge and Innovation Communities** to tackle global challenges through innovation.



WE ESTABLISHED A NETWORK





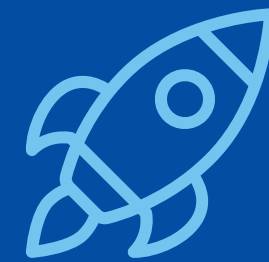
70+

Hubs across
Europe



9 900+

Ventures
Supported



71 BILLION

Valuation of EIT
start-ups



2 420+

Leading Partners



880 000+

Learners trained



9.5 BILLION

Investment raised
by EIT ventures



2 450+

New Products or services

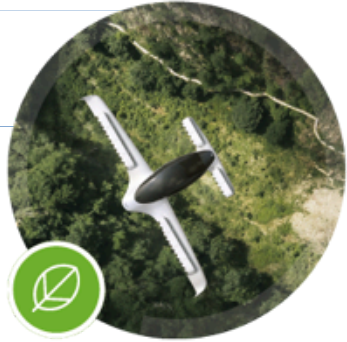
The EIT Community

- ✔ • A network of interconnected **Knowledge and Innovation Communities** driving innovation in strategic sectors.
- ✔ • Focused on bridging the gap between research and market.
- ✔ • Provides funding, acceleration, education, and ecosystem development.



EIT Knowledge and Innovation Communities

2010



EIT Climate-KIC

Accelerate the transition to a zero-carbon economy



EIT Digital

Drive Europe's digital transformation



EIT InnoEnergy

Achieve a sustainable energy future for Europe



EIT Health

Give EU citizens greater opportunities for a healthy life

2015



EIT RawMaterials

Develop raw materials into a major strength for Europe

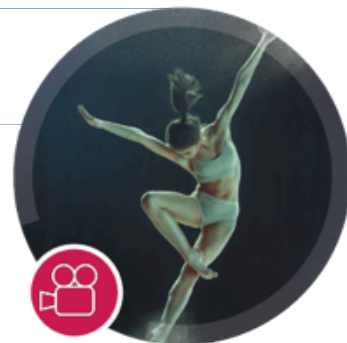
COMING SOON!



EIT Water

Contribute to a circular and sustainable water economy

2022



EIT Culture & Creativity

Unite Europe's creatives

2019



EIT Urban Mobility

Smart, green and integrated transport



EIT Manufacturing

Strengthen and increase the competitiveness of Europe's manufacturing industry


2017



EIT Food

Lead a global revolution in food innovation and production



Initiated by the EIT, a body of the European Union 

MEET EIT CLIMATE-KIC



Climate-KIC Innovation Experts



15+ years
supporting climate
innovation and
entrepreneurship



Operates across Europe,
Africa, South America,
and Pacific Islands



Connects climate
solutions with
governments,
corporates,
and investors

Explore open calls:





ClimaTech Connect

What's in it for you?

- Up to €25,000 in grant funding
- Tailored workshops and mentoring
- Funded travel to Demo Day in Valencia
- Visibility and access to the EIT innovation ecosystem

**Deadline:
6 June 2025**



What's the time commitment?

- Just 20 hours of online training, plus 2 travel days for the Demo Day in October. It's designed to fit around your existing workload.

MEET EIT CULTURE & CREATIVITY



EIT Culture & Creativity – Europe's Creative Innovation Hub

Launched in 2022,
as the **youngest
Knowledge and
Innovation
Community** of the
EIT family

Mission:
Boost sustainable
innovation
in Europe's **Cultural &
Creative Sectors and
Industries**

Targets **15 industries** including:



SPARK - Incubation Program 2025

This programme aims to support the creation of new ventures in the architecture and cultural heritage sectors.

Architecture: Sustainable building practices, climate-resilient urban planning, digital transformation in construction.

Cultural Heritage: Immersive AR/VR experiences, digital transformation projects, innovative business models for cultural heritage valorisation.

Deadline:
11 July 2025





Co-funded by the
European Union

MEET EIT DIGITAL



EIT Digital – the power of network

Launched in 2010 by the
**European Institute of
Innovation and
Technology**

Mission:

**Accelerate Europe's
digital transformation**
through innovation,
entrepreneurship, and
education in **deep tech**.

Explore all
opportunities



268 partners



24 offices across Europe

Key partners include:



BOSCH



**POLITECNICO
DI MILANO**



EIT Digital unites leading players in business, higher education and research.



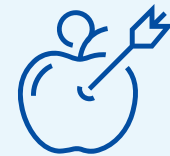
Co-funded by the
European Union

MEET EIT FOOD



Ecosystems Feeding the Future

Mission:



Transforming the way we produce, distribute, and consume food to improve health, sustainability, and trust.

Who we are:



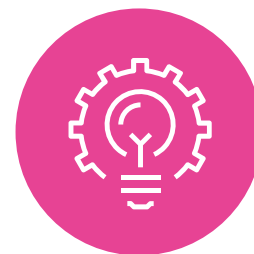
- Europe's leading food innovation initiative.
- Supported by the European Institute of Innovation and Technology (EIT).

Reach & Impact:



200+ partners

partners across business, research, and education



5 Innovation Hubs

North-East, Central, South, West, Co-Location Centre Spain



20+ countries

in the network





BGI is the
EIT Food
Representative
in Portugal

Innovation

Education

**EIT Food
Entrepreneurship**

**Public Insights and
Engagement**

EIT FOOD STARTUP SUPPORT PROGRAMS

EIT Food drives innovation by supporting entrepreneurs, innovators and students across Europe to turn their best ideas into reality.



Agrifood Disruptor



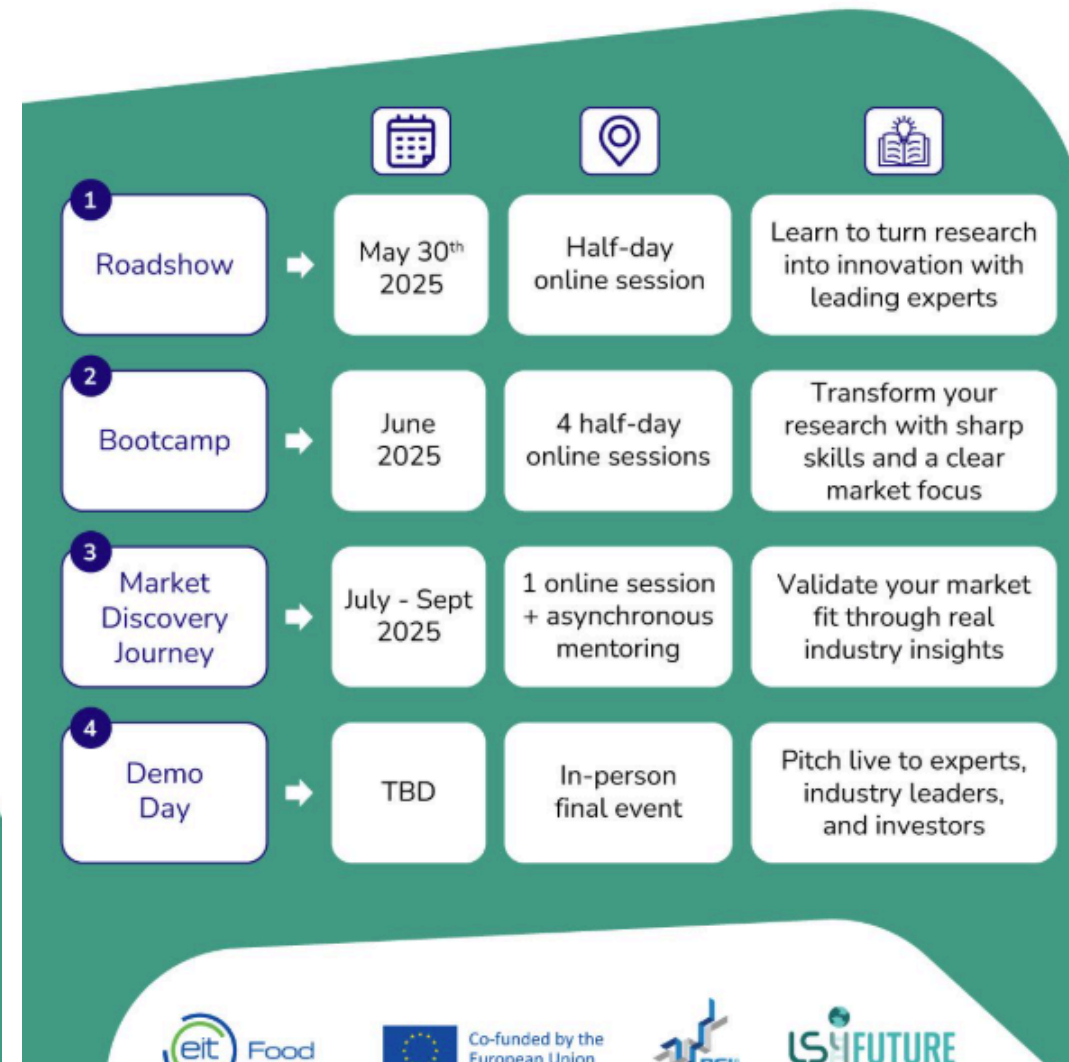
**Deadline:
8 June 2025**



Turning Research into
Market-Ready Innovation
in the Agrifood Sector



Turning Research into
Market-Ready Innovation
in the Agrifood Sector



Have these questions
ever crossed your mind?

What can I do more with my research?

How can I implement it in the market?

What are the funding opportunities that are available?

Come to our #RoadShow
and we can help you!

May 30th (online) 10:00am - 1:00pm



WHO SHOULD APPLY?

- Junior or senior researchers in agrifood-related areas of expertise
- Early-stage entrepreneurs with agrifood-related technologies
- Innovators in the agrifood sector working in TRL 3–6*
- All applicants should be either based in Portugal, of any nationality, or with Portuguese citizenship, based anywhere in Europe and associated countries.

Blue Economy Acceleration



Deadline:
8 June 2025



+++
+++
+++

Innovation program aiming to transform blue based technologies into market-ready ventures.

What are the focus areas?

SWIPE RIGHT TO DISCOVER >>>



+++
+++
+++

Top performers will pitch in a live Demo Day and compete for a **€2,500 prize pool** - with the potential for real-world **incubation at AmpliAqua®**.

Feeling **bold** today?

APPLY BY MAY 25TH!



WHO SHOULD APPLY?

- Senior researchers, PhD students, starting entrepreneurs, and SMEs working on innovative TRL 3-7 blue economy solutions, structured projects, or ideas after the first successful tests in a controlled environment
- Early-stage entrepreneurs and researchers working in blue bioeconomy topics
- Individuals or teams based in Europe or Horizon Europe-associated countries

RIS INSPIRE - HEALTHY SOIL4LIFE SUMMER SCHOOL

Co-funded by the
European Union

RIS Inspire Programme
HealthySoil4Life Summer School'25

**Make the difference:
Be a Food System Innovator
and a Soil Health Pioneer!**

Discover the village of Penha Garcia!



REGISTER NOW



You and 37 others

2 comments • 25 reposts

The INSPIRE Healthy Soil 4 Life program is an innovative, challenge-based learning experience designed to equip students, researchers, and professionals with the skills and knowledge to drive soil health innovations.

The course focuses on regenerative agriculture, soil conservation, and sustainable farming practices. Participants will engage with real-world case studies, collaborate with industry experts, and develop innovative solutions to tackle soil degradation challenges.

WHO SHOULD APPLY?

- **Students & Researchers** – Looking to specialize in soil health, sustainable farming, and agritech solutions.
- **Farmers & Agrifood Professionals** – Seeking new practices to enhance soil fertility and productivity.
- **Entrepreneurs & Innovators** – Developing solutions for regenerative agriculture and soil conservation.
- **Policymakers & Sustainability Advocates** – Driving strategies for sustainable soil management.
- **Only participants from RIS Countries can apply**

**Deadline:
15 June 2025**



INSPIRE - Circular Agrifood Autumn School 2025

Deadline:
31 July 2025



Co-funded by the European Union

Inspire - Circular AgriFood

Autumn School 2025

What will you learn?



SWIPE RIGHT >>



Co-funded by the European Union

Inspire - Circular AgriFood

Autumn School 2025

**Get Early Bird tickets
by June 30th!**

APPLY NOW





Agenda Thematic Topics

From Linear to Circular: Rethinking Agrifood Systems for Regeneration

Wasted Potential: Mapping Waste & By-products across the Food Chain

Feeding the Future: Circular proteins and Bioenergy from Food Waste

Reimagining Materials: Bioplastics and Packaging from Nature's Food Waste

Living systems | Circular solutions: from Worms to Health & Aquaculture

Blue Biotech: Marine microorganisms powering Circular Innovation in Food & Beyond

Regenerative Inputs: Transforming Agrifood Waste into Soil health

WHO SHOULD APPLY?

- **Bachelor Students:** Gain insights into circularity principles, cutting-edge technologies, and hands-on experience to support sustainable agrifood practices.
- **Master's Students (STEAM disciplines):** Develop a competitive edge with advanced knowledge, practical skills, and an entrepreneurial mindset to drive circularity in future careers.
- **PhD Students & Researchers:** Expand research perspectives, enhance implementation strategies, and connect with industry partners to bring innovations to market.



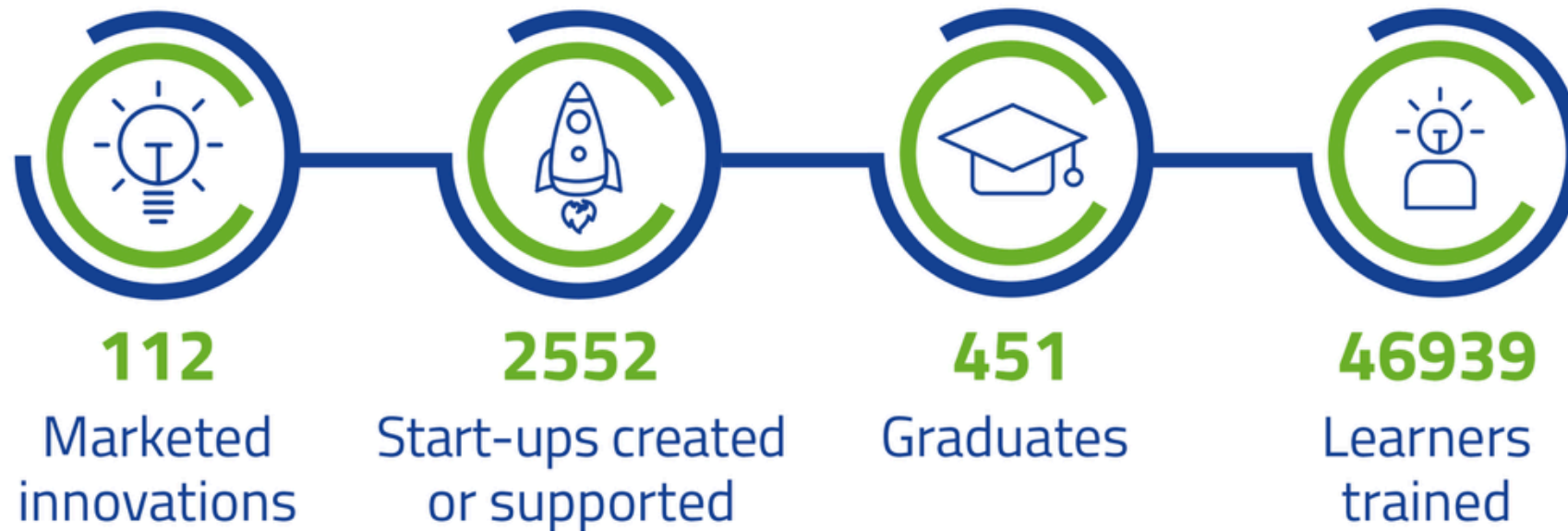
Co-funded by the
European Union

MEET EIT HEALTH



EIT Health: A Catalyst for Health Start-ups, Research, and Education

- **EIT Health** established by the **European Institute of Innovation and Technology** in 2015.
- Its mission is to create **healthier lives for EU citizens** and build **more sustainable healthcare system**



360+
partners



including hospitals,
research labs, and
companies like
AstraZeneca

25
offices



across Europe
And beyond

EIT Health InnoStars – Rooted in Potential: Growing Innovation in Emerging Regions

Check out our latest opportunities and apply!



What is EIT Health InnoStars?

- A regional cluster of **EIT Health** operating in **Hungary, Italy, Poland, and Portugal**.
- Focused on boosting healthcare innovation in regions with **untapped potential**, as per the European Innovation Scoreboard.

+50
members

4
countries

- industry
- academia
- the third sector
- policy-makers
- healthcare providers

EIT Health Representatives

EIT Health InnoStars



4.5K

ecosystem
leaders engaged



+7K

professionals
trained



70

innovation
projects supported



370

start-ups
supported



€57.5M

investment
attracted

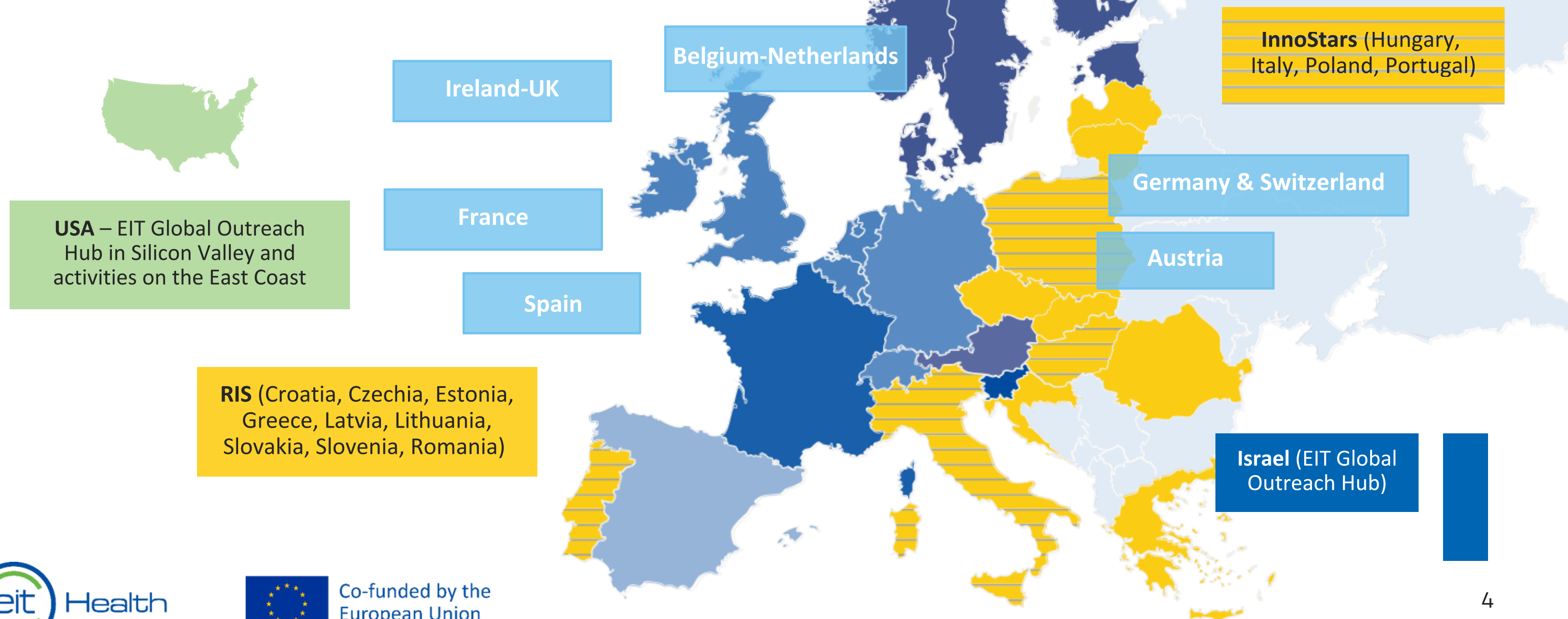
**If EU Healthcare actors are the trees,
EIT Health is the mycelium connecting
them**

**So, if you are searching one of these,
you are at the perfect place:**



In Your Region

EIT Health conducts activity across Europe, as well other parts of the world.



EIT Health InnoStars Connect

**Deadline:
13 June 2025**



Who can apply

- ▶ European hospitals, universities, research institutions, SMEs and health startups with a solution technology with a maturity level of at least TRL 5- TRL7.

Participants must have a registered branch in:

- ▶ **EU Member States:** Bulgaria, Croatia, Cyprus, Czech Republic, Estonia, Greece, Hungary, Italy, Latvia, Lithuania, Malta, Poland, Portugal, Romania, Slovakia, Slovenia, Spain.
- ▶ **Horizon Europe Associated Countries:** Montenegro, Republic of North Macedonia, Serbia, Turkey, Ukraine.
- ▶ **Outermost Regions:** Guadeloupe, French Guiana, Réunion, Martinique, Mayotte and Saint-Martin (France), the Azores and Madeira (Portugal), and the Canary Islands (Spain).

Please note that participants must become EIT Health Innostars Community Members to join, which requires a membership fee of €1,000.



Smart Funding €10,000/per team

- €9000 solution validation and travelling
- €1000 mentoring and coaching



Mentoring & Coaching

Tailored mentoring is provided by experts from EIT Health's Mentoring and Coaching Network (MCN) to suit the participants' needs.



Pharma Partnership

Engage and collaborate with leading pharmaceutical companies dedicated to driving progress in healthcare solutions.



Bootcamp & Demo Day

Tailored bootcamp sessions for each challenge that help validate and scale the proposed solution.



Grand Final

A financial prize for the top teams in the EIT Health Innostars grand final event.



Market Access

Become part of the biggest health innovation network with EIT.



InnoStars Partner

Build new connections and access EIT Health's extensive range of services.

Challenge 1

Improving Neonatal Respiratory Care (In particular NRDS & BPD)

Examples of Potential Innovations: Predictive -OMIC profiling, genetic testing, parental risk profiling, regenerative stem cell therapies, smart NICU solutions, remote monitoring, mHealth support, and improved enteral nutrition.



Chiesi Group is looking for groundbreaking solutions in Neonatal Respiratory Care.

Neonatal Respiratory Distress Syndrome (NRDS) and Bronchopulmonary Dysplasia (BPD) are critical challenges in neonatal care, impacting survival and long-term health.

Key NRDS Challenges:

- Limited access to neonatal care and surfactant therapy, especially in underserved areas.
- Lack of reliable early diagnostic tools beyond FiO_2 .
- Need for less invasive treatments and reduction of comorbidities like BPD.

Key BPD Challenges:

- No standardised definition, leading to inconsistent diagnosis and treatment.
- Lack of targeted therapies to reduce severity and long-term impact.

Chiesi Group is looking for innovative and sustainable solutions to improve neonatal care, focusing on:

- Early diagnosis & risk assessment (biomarkers, predictive models) also of possible comorbidities.
- Non-invasive monitoring (NICU & home settings).
- Smart, sustainable drug delivery & neonatal care solutions.
- Digital health innovations (apps for baby monitoring).
- Expanded neonatal care access, especially in low-resource settings.

Challenge 2

Enhancing Prenatal & Neonatal Care



Supporting Preterm Babies:

- Improve disease management, reduce comorbidities, and provide respiratory rehabilitation.
- Use digital tools (apps, wearables) for early risk detection (e.g., preeclampsia, high blood pressure).
- Reduce rehospitalization and infection risks.
- Ensure access to appropriate prenatal care (e.g., steroid injections).
- Prevent complications in infants with BPD (e.g., COPD, infections)

Supporting Parents:

- Strengthen parent-child bonding and provide psychological support.
- Educate parents on home care (vaccines, infection prevention, oxygen portability).
- Improve clinical trial experiences (decentralized televisits, remote monitoring).
- Address health inequities by enhancing existing initiatives or launching new ones.

Challenge 3

**Innovating Hospital Scheduling:
Enhancing Care Delivery and
Patient Experience**

**Deadline:
13 June 2025**



UNIDADE LOCAL DE SAÚDE
COIMBRA

[ULS de Coimbra](#) seeks innovative digital solutions to optimise hospital scheduling, enhancing clinical workflows and patient appointment management.

Topic A. Digital Solutions for Hospital Management – Automatic Scheduling of Clinical Events: Solutions must be capable of processing and responding to real-time updates to avoid double bookings or delays.

Topic B. Digital Solutions for Hospital Management – Patient Management and Appointments: Systems should consider patients' preferences and constraints, such as availability on specific days and language needs, to ensure equitable and effective scheduling. Utilising AI chatbots can enhance this scheduling process and improve patient communication.

An abstract graphic composed of several blue rounded rectangular and circular shapes. Some shapes are solid blue, while others are white with blue outlines, creating a layered, architectural effect on the left side of the slide.

INNOSTARS SPICE

Uniting Strengths, Shaping Success.

InnoStars SPICE Overview

- The **Strategic Partnership Initiatives for Competitive Edge** (SPICE) programme aims to drive **innovation** in the healthcare sector by offering **tailored** development and commercialisation services and mentoring, enabling rapid scale-up and market entry.
- A total of **10 teams** will be chosen to participate in the program and enter in a **joint** business with EIT Health InnoStars.
- Two cut-offs



New call soon!

Programme benefits



Customised services

Up to € 100,000/per team

Get access to a wide list of services provided by EIT Health InnoStars and SPICE Implementing partners that can support to further validate and commercialise your solutions



Mentoring & Coaching

Up to € 60,000/per team

Tailored mentoring provided by experts from the EIT Health InnoStars Expert Pool based on your needs.



EIT Health InnoStars member

Become part of the biggest health innovation network and take advantage of an extensive range of services.

Access to tailored services

Selected participants get access to **in-kind development and commercialisation services** (max value of **€100,000** per team) provided by **SPICE Implementing partners**, procured to the related SPICE Call for service providers.

1. Regulatory Support
2. Technology and Innovation Support
3. Data Privacy
4. Clinical Validation
5. Quality Assurance
6. Business Strategy and Improvement
7. Financial Modelling
8. Commercialisation Support
9. Funding and Investment
10. Market scale-up and expansion



EIT Health participation in National projects

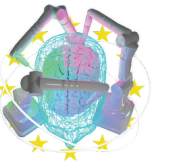
DigiHealthPT & TEF Health



DigiHealthPT EDIH

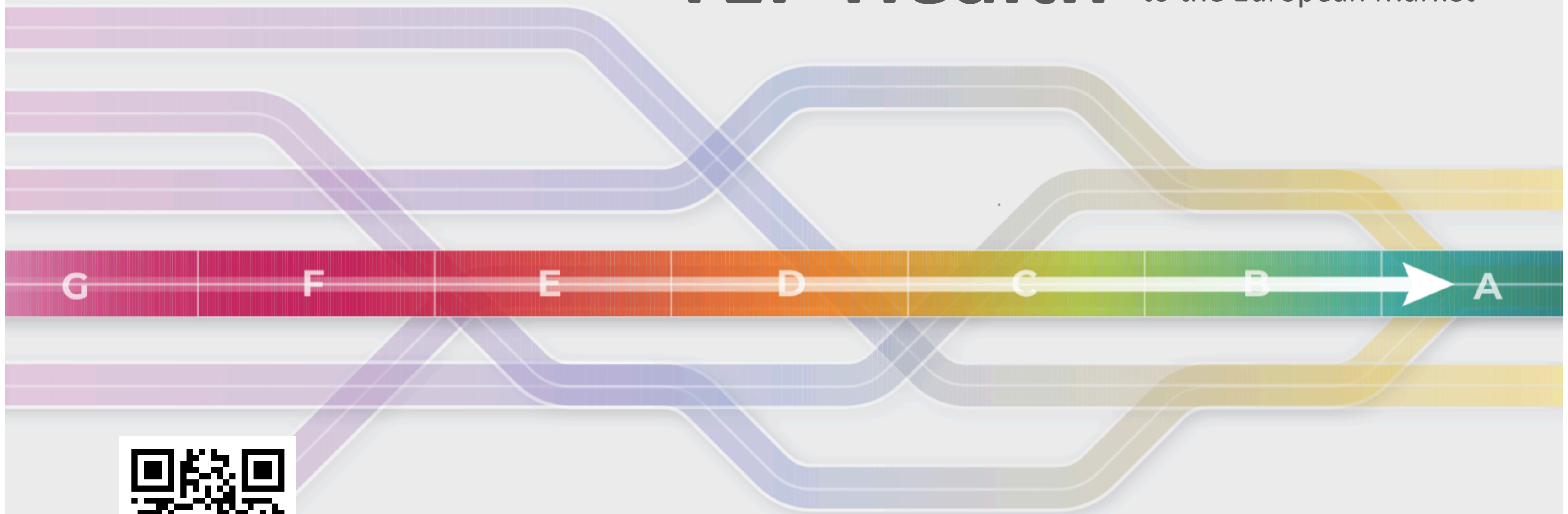
from Portugal to the Digital World





TEF-Health

Fast track your access
to the European Market



TEF Health - Testing and Experimentation Facility for Health AI and Robotics
is a one-stop-shop for accelerating real-world testing and certification

inno

MEET

EIT

INNO ENERGY



What we achieved so far

200+

Portfolio companies

€25b

Investment and funding raised
by our portfolio companies

2.1 Gt

of CO2e saved cumulatively
by 2030

92%

Survival rate

2,200

Masters+ graduates in
sustainable energy

25,000

Jobs created



EIT InnoEnergy secures
over €140 million
in private placement round

Major players from industrial,
financial, training and digital
sectors invest in accelerating
clean energy industrial innovation



MEET EIT RAW MATERIALS



A Turning Point for Mining Innovation

1. **Invest in disruptive technologies:** Europe must lead the world in breakthrough technologies that reduce the environmental impact of raw material extraction and processing.
2. **Accelerate the circular economy:** Support large-scale investments in industrial symbiosis, product design, and recycling technologies that enable reclaiming Critical Materials along the full value chain of products
3. **Strengthen public private partnerships:** We recommend allocating €4 billion in public-private funding over the next decade, leveraging this to attract additional private investments.
4. **Support workforce development:** A green and digital Europe requires a skilled workforce.



EIT RawMaterials – the leading PPP in raw materials and advanced materials innovation covering the full value chain.

World's largest community in the raw materials sector



The Leading Knowledge and Innovation Network

300
MEMBERS

800
START-UPS

350+
UNIVERSITIES

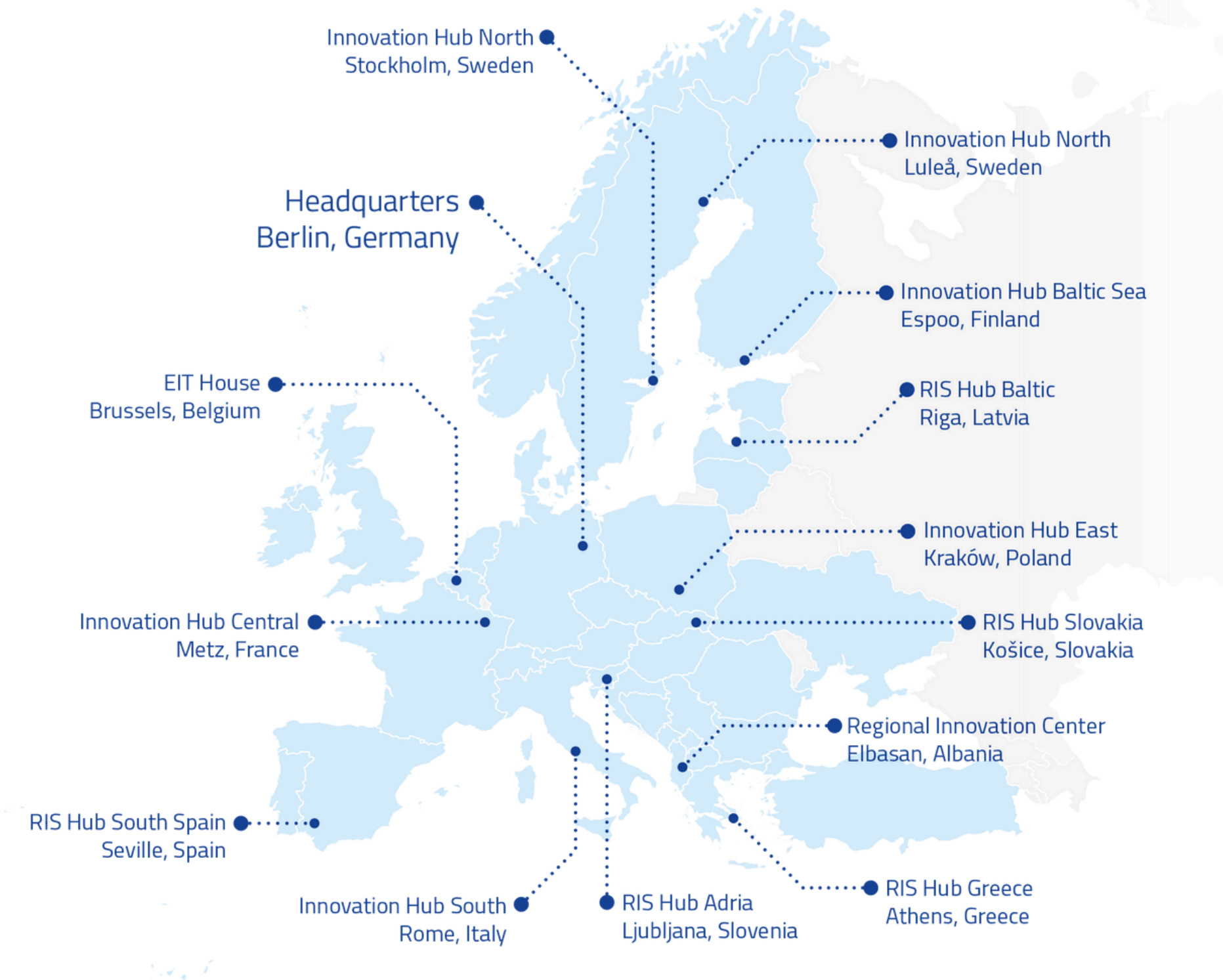
750+
ERMA PARTNERS

Entire Raw Materials Value Chain Coverage



International Strategic Partnerships

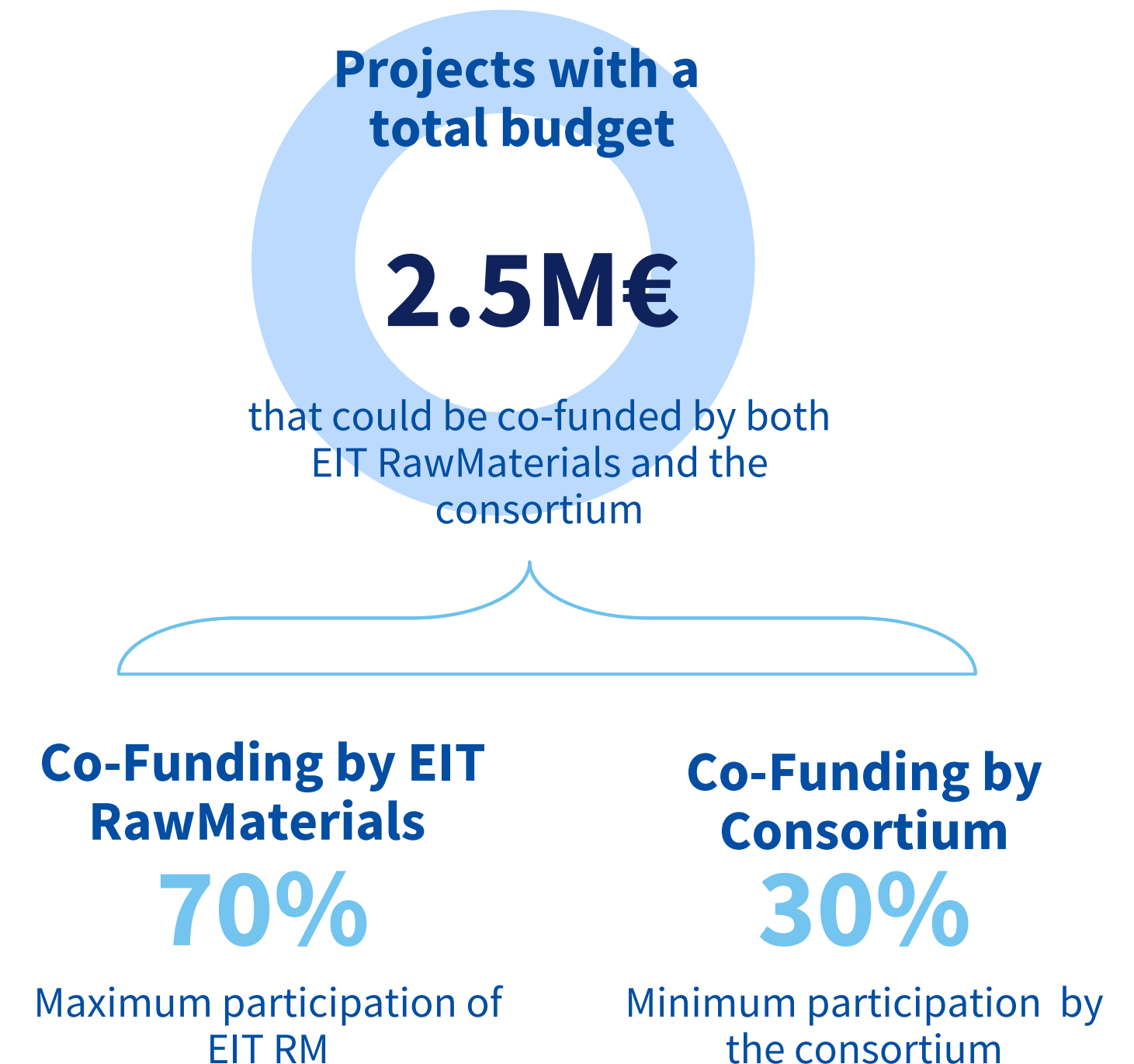
 **Africa**  **Americas**  **Asia**  **Australia**



OPEN NOW: KAVA 13 Call for Innovation – Scale-up

- **KAVA 13 Objective:**
- Aims to support technology development progressing **from TRL 5 to TRL 8**, from lab validation to demonstration and pre-commercial deployment throughout a **2-2.5 years-period project**.
- Aims to foster **collaboration in-between actors** of the raw materials value chain
- **Strategic importance:**
- Promote innovation in the raw materials sector through targeted funding of technology upscaling projects aligned with three strategic pillars: **Responsible Sourcing, Sustainable Materials, Circular Societies**
- **Consortium Composition:**
- Minimum of **2 participants** from 2 different Horizon Europe-eligible countries (Maximum of 5 participants)
- Must include partners from at least **two sides of the knowledge triangle** (Industry, Academia, Research)
- Lead participant must be an EIT RawMaterials Core or Associate Partner

Financial aspects



¹Note: The criteria for KAVA 13 Applications are different if you are located in RIS countries. For more information about RIS-eligible countries, feel free to consult this website : <https://www.eit.europa.eu/activities/eit-regional-innovation-scheme-ris-closing-innovation-divide-europe>

Let's connect!

For more information



Ana Carina Veríssimo
Business Development
Manager

ana-carina.verissimo@eitrawmaterials.eu



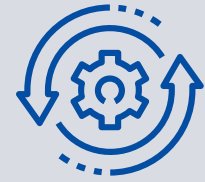
MEET EIT URBAN MOBILITY



Ecosystems Empowering Change

Mission

Accelerating the transition to sustainable urban mobility for more liveable cities.



Scope

Largest European innovation community for urban transport.



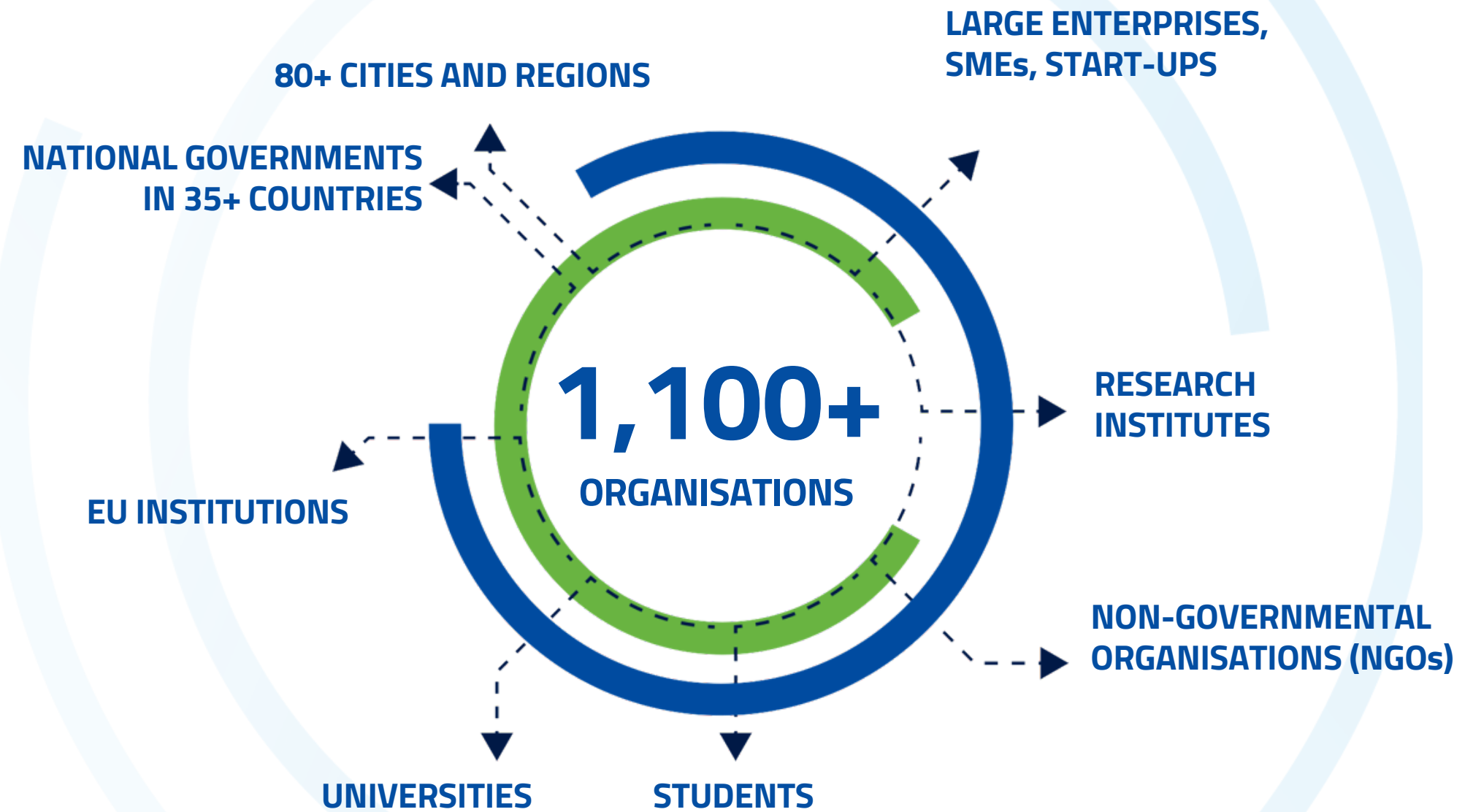
Reach

Active in **35+ countries**, with **80+ cities and regions**, and **1,100+ partner organisations** including start-ups, governments, NGOs, and academia.



Strategic Hubs

Regional centers in Barcelona, Amsterdam, Munich, Prague, Copenhagen.



Urban Mobility Disruptor, 2025

APPLICATIONS UNTIL
JULY 31

- Urban Mobility Disruptor is a unique Europe-wide program designed to help researchers, academics, and early-stage innovators turn breakthrough ideas into entrepreneurial success.
- We're looking for:
 - **Researchers** and tech transfer professionals
 - **PhD candidates, postdocs, and professors**
 - **Academic teams with innovations in urban mobility**, engineering, sustainability, or smart cities
 - Priority given to applicants from EIT RIS countries.



APPLY BY
JULY 31ST
2025!

URBAN MOBILITY DISRUPTOR ENTREPRENEURSHIP PROGRAM

Science based innovators!
Start your entrepreneurial journey today.

The Program

Urban Mobility Disruptor is a unique Europe-wide program designed to help **researchers, academics, and early-stage innovators** turn breakthrough ideas into entrepreneurial success. Whether you're working on cutting-edge technologies or pioneering new mobility solutions, this program gives you the skills, tools, and network to move from the lab to the marketplace.

Why Join?

Validate your technology's market potential

Gain entrepreneurial skills

One-on-one mentoring with industry experts

Find piloting and funding opportunities

Pitch your innovation to cities, corporates, and investors at the final event in Portugal

Who Should Apply?

- Researchers and tech transfer professionals;
- PhD candidates, postdocs, and professors;
- Academic teams with innovations in urban mobility, engineering, sustainability, or smart cities;
- Priority given to applicants from EIT RIS countries;
- No startup is required - just your research and ambition.

Timeline & Structure

Bootcamp: September 2025 | Online

A 12-hour online training over three weeks to explore key business topics and build a roadmap to validate market fit.

Market Discovery Journey: October - November 2025 | Online

Weekly mentoring, connect with industry stakeholders, and explore piloting opportunities to refine the value proposition.

Final Pitch Event: November 2025 | In-Person in Lisbon, Portugal

Pitch your innovations to an audience of city officials, investors, and partners. A launchpad for growth and collaboration.



• farklabs.com/UMDisruptor
• bgi.pt/disruptor/urban-mobility-disruptor



BGI Call Application Support

Deadline Applications
30 June 2025

Looking to secure European funding for your urban mobility project?

We've got your back! As the EIT Urban Mobility Portugal Representatives, we're offering specialised support to help three selected projects succeed in their funding journey.

What you'll get:

- ✓ Hands-on support with your proposal and application
- ✓ Help building the right consortium
- ✓ Step-by-step guidance through the EIT Urban Mobility platform (application & submission)

📌 Applicable Calls:
Innovation Open Call and **RIS Education Open Call**.



The graphic features a background image of a busy pedestrian street. A large blue semi-circle is overlaid on the bottom half. At the top left of the blue area is the EIT Urban Mobility logo. At the top right is the European Union flag with the text 'Co-funded by the European Union'. The main text in the blue area asks if the user is a Startup, SME, City Authority, or Research Institution working in Urban Mobility, and offers help to secure European funding. A green button with a right arrow says 'DISCOVER HOW'. The BGI Sustainable Ventures logo is in the bottom right corner.

eit Urban Mobility

Co-funded by the European Union

Are you a **Startup, SME, City Authority** or **Research Institution** working in Urban Mobility?

If you are looking to secure **European funding** for your project, we can help you!

DISCOVER HOW ➔

BGI®
Sustainable Ventures

EIT Urban Mobility - Innovation Open Call

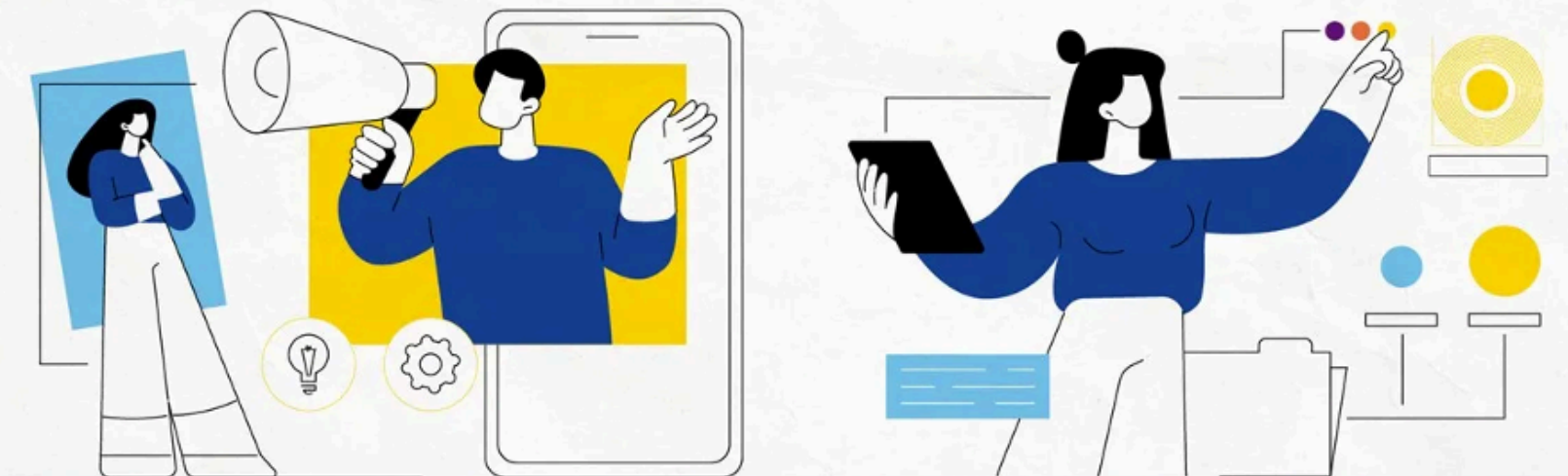
**Deadline Applications
Jun. - Sep. 2025**

- Seeking new innovations that tackle the **most pressing urban mobility challenges**. Solutions should demonstrate **strong potential for scalability and market adoption**. Projects should foster **collaborative innovation** – whether across the value chain or other strategic partnerships- with a **clear pathway to market deployment** by the project's end.
- **Consortium**: Minimum of 2 partners from 2 different EU Member States or associated countries to HE.
- EIT Urban Mobility co-funding of up to € 1M; up to 24-month project duration;

For questions please contact: urban.mobility@bgi.pt

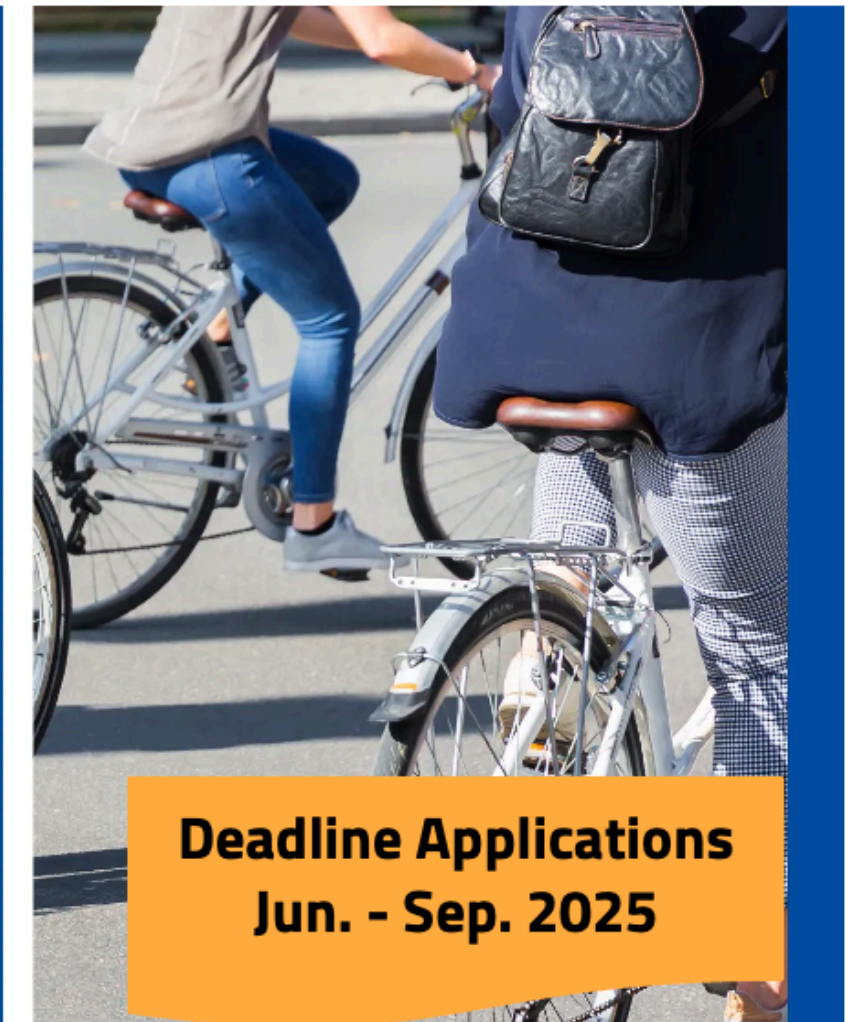
Open call for innovation

Have a **close-to-market innovative solution** that can accelerate change towards sustainable mobility for liveable urban spaces?



EIT Urban Mobility - RIS Education Call

- Funding projects that can support the overall RIS strategy and aims, offer high-quality education, reach a large audience and market, and gain recognition efficiently with a lasting effect. New activities can be regarded as pilots for further future expansion, increasing geographical coverage and volume, that may also be possible to repeat and scale up in the coming years.
- The activities under RIS Education include capacity building, education and training with a focus on innovation and entrepreneurship, urban mobility, and the organisation of Summer and Winter Schools.
- EIT Urban Mobility co-funding of up to € 150k; 12-month project;



Urban Mobility Venture Incubation Program

Applications to open in
June 2025

Specialized Support for Startup Creation

We identify promising innovators and research teams across Europe, supporting them in launching and establishing their ventures within the EU.

What we offer:

- Financial support of up to **€ 5,000/team**
- Help in the **development of your MVP**
- **Incorporation** of your venture
- 8-week targeted **mentoring**
- Becoming part of the leading innovation ecosystem by **joining the EIT Urban Mobility Network**

For questions please contact: urban.mobility@bgi.pt





Contact details

