



**INOVAÇÃO
COM PROPÓSITO**

New European Bauhaus

Margarida Oliveira, Agência Nacional de Inovação



GOVERNO
DOS AÇORES

VICE-PRESIDÊNCIA
DO GOVERNO



A INOVAÇÃO COMEÇA AQUI

Table of contents

	The NEB movement	01
	Evolution of NEB	02
	NEB initiatives	03
	NEB opportunities	04
	Useful information & tools	05

01



The NEB movement



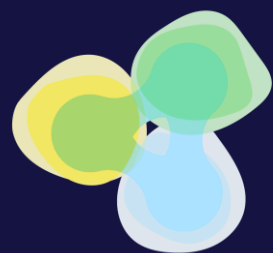
A INOVAÇÃO COMEÇA AQUI



NEB is a creative and transdisciplinary movement in the making!

It was established to translate the European Green Deal into tangible change on the ground and ensure that the green transformation is people-centric, putting societal needs first. To do so, the initiative fosters the development of innovative solutions for the transformation of living spaces that are sustainable, inclusive and affordable while also taking into account other aspects that increase their acceptability, such as cultural identity and heritage.

3 inseparable values



New European Bauhaus
beautiful | sustainable | together



A INOVAÇÃO COMEÇA AQUI

1

Sustainability

from climate goals to circularity, zero pollution, and biodiversity

2

Aesthetics

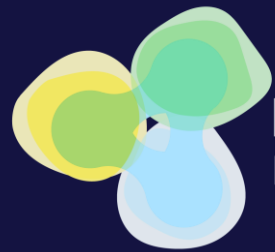
quality of experience and style beyond functionality

3

Inclusion

from valuing diversity to securing accessibility and affordability

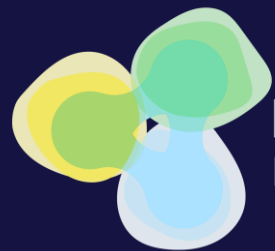
Approach (3 principles)



New European Bauhaus
beautiful | sustainable | together

- 1 Multi-level**
From global to local
- 2 Participatory**
- 3 Transdisciplinary**

Thematic axes



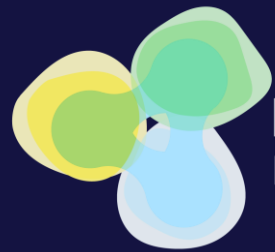
New European Bauhaus
beautiful | sustainable | together

- 1 reconnecting with nature
- 2 regaining a sense of belonging
- 3 prioritising the places and people that need it most
- 4 fostering long term, life cycle and integrated thinking in the industrial ecosystem



A INOVAÇÃO COMEÇA AQUI

Interconnected transformations



New European Bauhaus
beautiful | sustainable | together



A INOVAÇÃO COMEÇA AQUI

- 1 of places on the ground
- 2 of the environment that enables innovation
- 3 of our perspectives and way of thinking

02



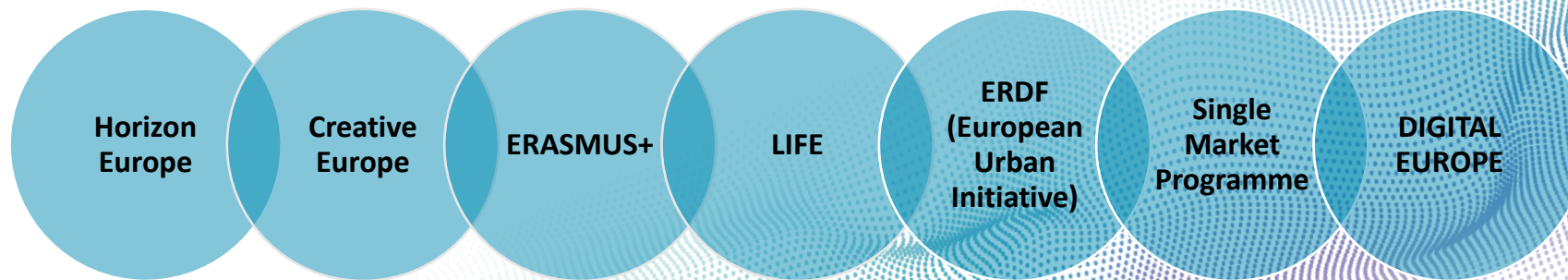
Evolution of NEB



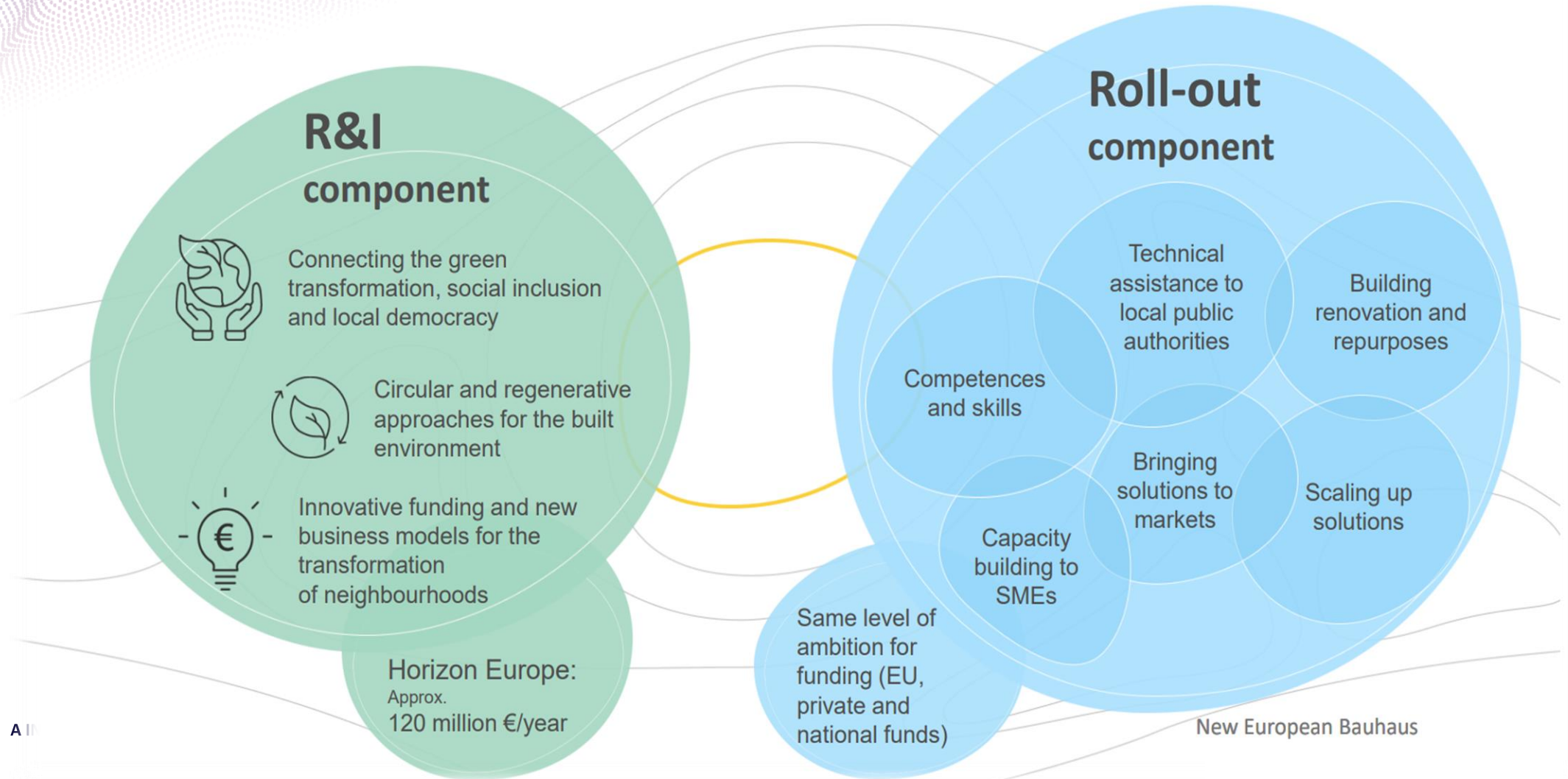
A INOVAÇÃO COMEÇA AQUI



- Launched in September 2020 by the President of the European Commission (EC), Ursula von der Leyen;
- Set as a dynamic and bottom-up movement and a priority, not as a funding mechanism;
- Initially defined as having 3 sequential phases: co-design, delivery & dissemination;
- From **2021 to 2024**, funding has been secured across different programmes from the EC and several initiatives with no or residual funding have been promoted.



NEB Facility: 2025 - 2027



NEB Facility: support & representation system

The National Contact Points

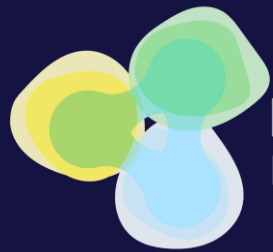
The roll-out component
NCP figure since January
2022



The R&I component
NCPs & experts
appointment since July
2024



Roll-out component: NCP role



New European Bauhaus
beautiful | sustainable | together



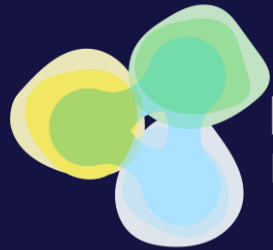
A INOVAÇÃO COMEÇA AQUI



Role on the making due to recent events, but up to date:

- 1** disseminating NEB principles, values and initiatives
- 2** encouraging national stakeholders to adhere to NEB and NEB initiatives;
- 3** acting as a bridge between the national stakeholders and the European Commission;
- 4** contributing to mobilize instruments and funds to support NEB implementation and projects

R&I component: NCP (& delegate) role



New European Bauhaus
beautiful | sustainable | together

- 1 to represent Portugal in the Programme Committees;
- 2 disseminate Horizon Europe and its opportunities;
- 3 support the national community applying to HE calls (in all stages of a proposal).

03



NEB initiatives



A INOVAÇÃO COMEÇA AQUI



NEB Partners

Who

Any entity, except for-profit organisations and public authorities

What

Partners are organisations with a significant outreach capacity who are trusted members of their communities. Their core activities address one or more dimensions of the New European Bauhaus. Partners commit to organising several types of activities, for example:

discuss how diverse professions and disciplines can interpret and enrich the initiative; by organising trans-disciplinary conversations, meetings, and conferences; by identifying or starting projects, practices or concepts that enact the NEB principles and to share them with the public; etc.



NEB Friends

Who

Any for-profit organisation or public authority.

What

Friends represent a resource for the Community. They are willing to provide some form of support to the projects. Friends offer support to several types of activities, for example: by discussing how diverse professions and disciplines can interpret and enrich the initiative, i.e., by organising trans-disciplinary conversations, meetings, conferences; by identifying projects and practices that follow the NEB principles, and by sharing them with the public; by co-creating with citizens and institutions beautiful, sustainable, inclusive living experiences; by offering to host or sponsor NEB Lab projects.



NEB Festival

What

The New European Bauhaus Festival is a hybrid event, taking place every two years, which aim is to showcase innovative projects, creative ideas, art and culture, and promote discussions. It consists of a journey of creativity and collaboration exchange on visions with people from the Commission and across the globe, consisting normally of: a FORUM, featuring keynotes and panel discussions, a FAIR of workshops, labs, and exhibitions, a FEST part, showcasing artistic performances and finally, of Satellite Events that take place all over Europe and beyond, ensuring that the spirit of the New European Bauhaus Festival reaches far and wide.

The Festival will also features the New European Bauhaus Prizes Ceremony.



A INOVAÇÃO COMEÇA AQUI



NEB Lab

What

The **NEB Lab** is where and how NEB is implemented in concrete and tangible projects. NEB Lab projects manifest the NEB into concrete actions with two missions:

- to create enabling conditions for the green transition, such as new tools, frameworks, policy recommendations, etc.
- to trigger tangible transformation on the ground.

NEB Lab projects:

- **Create or replicate** beautiful, sustainable, inclusive **places, products or experiences** or enable initiatives to achieve that.
- **Provide results** that are practical and replicable.
- Are change processes that **benefit communities** and ecosystems.
- Are based **on international and cross-sectoral partnerships**.
- **Inform the policy-making** processes with their outputs, outcomes, and learnings.
- Offer open-source learning opportunities for Community members.
- Use **participatory design methods and tools** and draw on cross-disciplinary competences.



NEB Prizes

What

The NEB prizes exemplify beautiful, sustainable, and inclusive real-life projects and encourage the younger generation to develop new concepts and ideas. It is an annual competition with different strands and categories in competition. Usually:

Categories:

- 1.Reconnecting with nature
- 2.Regaining a sense of belonging
- 3.Prioritising the places and people that need it the most
- 4.Shaping a circular industrial ecosystem and supporting life-cycle thinking

2 strands per category:

- 1.Champions - existing and completed projects in line with the New European Bauhaus values and principles
The winners receive EUR 30 000 and a communication package.
- 2.Rising Stars - concepts by young talents under 30
The winners receive EUR 15 000 and a communication package.



04



NEB
opportunities



A INOVAÇÃO COMEÇA AQUI



NEB Facility: have a say

Public consultations on 2025-27 priorities for New European Bauhaus Facility: help define the 2025-27 roadmap for the NEB Facility.

Deadline: 1st of October

Open calls: EIT (Horizon Europe)

Connect New European Bauhaus Open Call 2025: support solutions and initiatives that respond to challenges identified by the local community and to facilitate the exchange of knowledge between people.

Deadline: 26th September

Co-create New European Bauhaus Open Call 2025: support projects that allow people and communities to re-imagine communal spaces – bringing them closer to nature, building a shared sense of belonging and addressing local needs.

Deadline: 10th October



Upcoming calls: NEB Work-Programme 2025 (Horizon Europe)

What: R&I projects of international collaboration, ~3-5M€/project
When: publication ~Q1 of 2025 and deadline in September 2025

- Making the built environment more beautiful, sustainable and inclusive through well-designed and innovative urban furniture;
- Bio-fabricated materials for sustainable and inclusive construction
- Re-thinking investment risks and returns through the multi-faceted value creation of built environment projects following the New European Bauhaus



05

 **Useful
Information &
Tools**



A INOVAÇÃO COMEÇA AQUI



To know more about NEB

- Definition of principles & approach for NEB's delivery: [Communication setting out the concept of the New European Bauhaus, September 2021](#)
- Values, principles and approach: [NEB Compass](#)
- Initiatives and projects: [NEB dashboard](#)
- How NEB is a project: [NEB Investment guidelines](#)
- Regularly by the EC: [website](#) & [newsletter](#)



Useful Tools

To follow your **NCPs**

- GNAD – Grupo Nacional de apoio à discussão do Horizonte Europa
- ANI - Agência Nacional de Inovação (list-manage.com)



Useful Tools

New European Bauhaus: National Contact Points & National Representatives



MARGARIDA OLIVEIRA

margarida.oliveira@ani.pt



NATÁLIA DIAS

natalia.dias@ani.pt

OBRIGADO

www.ani.pt



A INOVAÇÃO COMEÇA AQUI